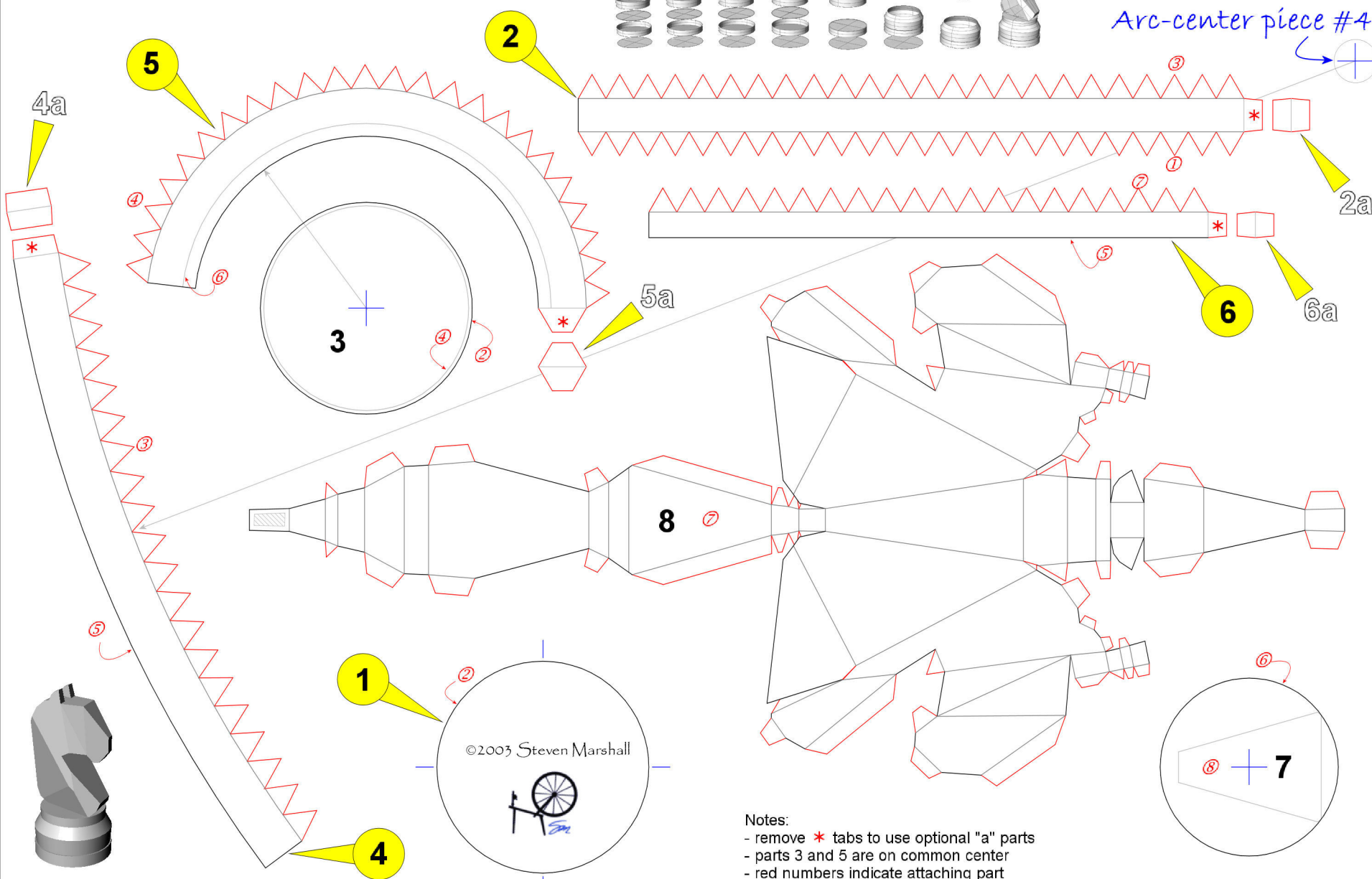
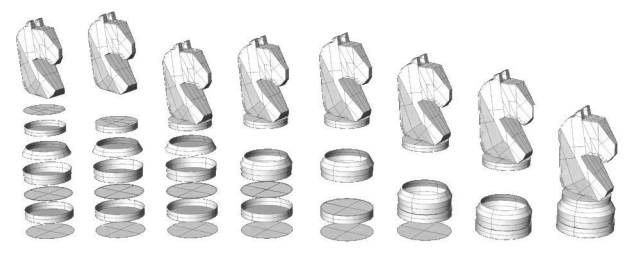




# Homespun Magixx

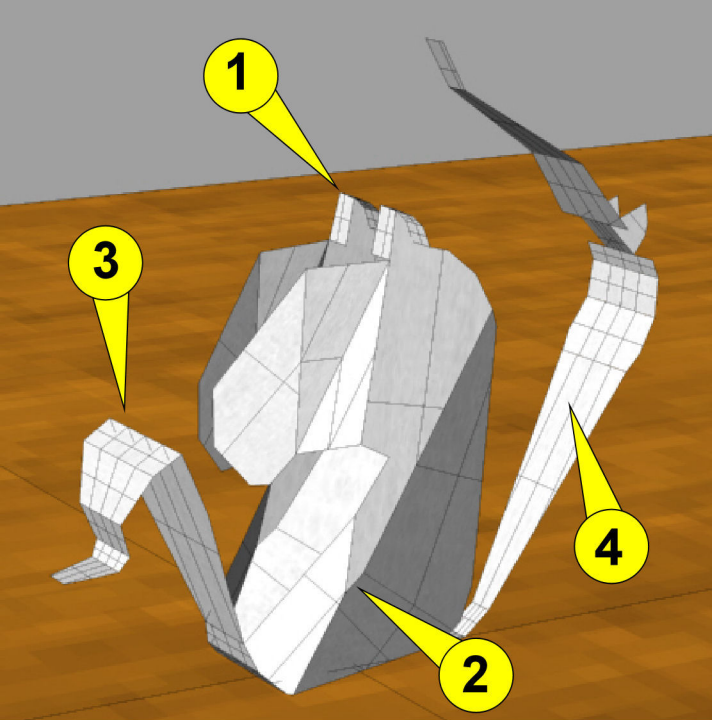
papercraft models and such



Arc-center piece #4

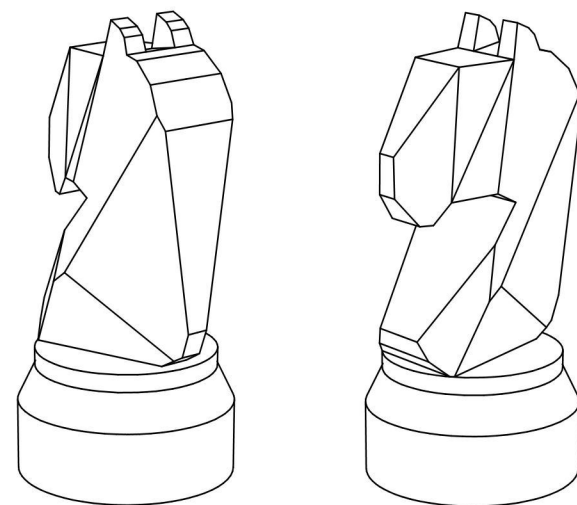
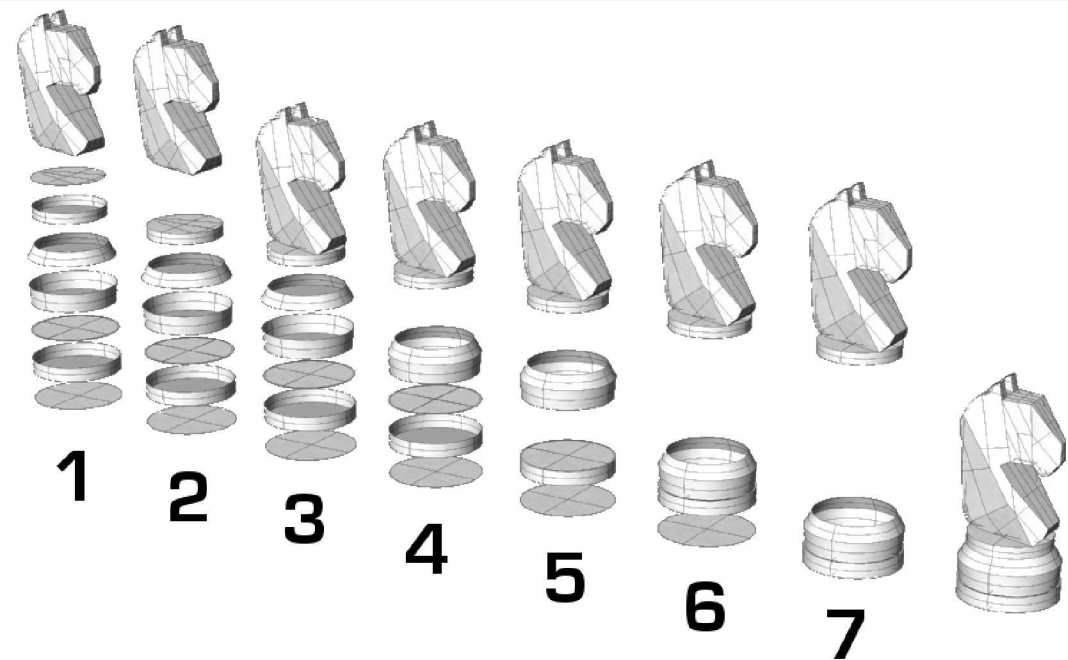
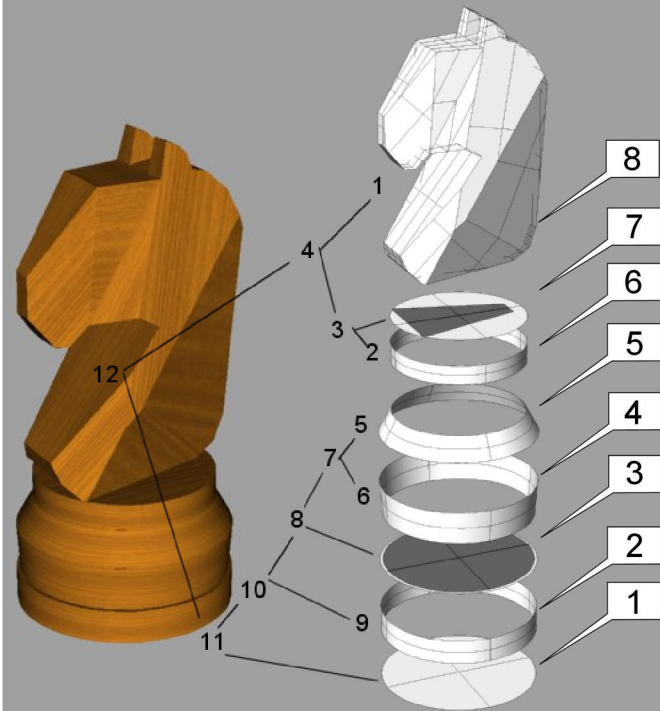
©2003 Steven Marshall

- Notes:
- remove \* tabs to use optional "a" parts
  - parts 3 and 5 are on common center
  - red numbers indicate attaching part



1. shape the ears
2. shape the sides
3. fold up the front flaps
4. fold up the rear flaps

# Knight



Homespun Magixx  
papercraft models and such

